



SilverDoor®

Abbots Apartments, Centre, Guildford

DESCRIPTION

These Guildford serviced apartments are in an exclusive development of thirty-four contemporary apartments, a five minute walk from the mainline train station which has links to London Waterloo, Reading and Gatwick Airport. Gatwick and Heathrow airports are a 45 minute and a 35 minute drive away respectively. The serviced apartments are also only a five minute walk from Guildford town centre, meaning guests can easily enjoy the restaurants, bars, shops and leisure facilities that this historic town has to offer.

Set around a landscaped courtyard, the comfortably furnished apartments are ideal as both business and leisure accommodation, offering a choice of one or two bedrooms with fully equipped kitchens, double bedrooms, bathroom and a lounge/dining area. Some apartments also have balconies. Secure underground parking is also available.

NB. The arrival service requires two hours notice prior to arrival.

RATING



PROPERTY SERVICES

Reception hours: 24 Hour
Key collection: On site
Maid service: Once weekly
Pet policy: Some Allowed
Check-in time: 15.00
Check-out time: 10.00
Security deposit

PROPERTY SAFETY AMENITIES

Fire certificate
Apartment smoke alarm
Continuously monitored alarms
Automatic fire doors
Emergency information in apartments
Emergency lighting
Public liability insurance
Fire blanket and/or extinguisher
Emergency exit signage
Spyhole/intercom system
Gas safety check
Electrical safety check
Fire risk assessment carried out
Management support available 24 hours:
By phone

FOOD AND DRINK FACILITIES

Welcome pack: Free

APARTMENT FEATURES

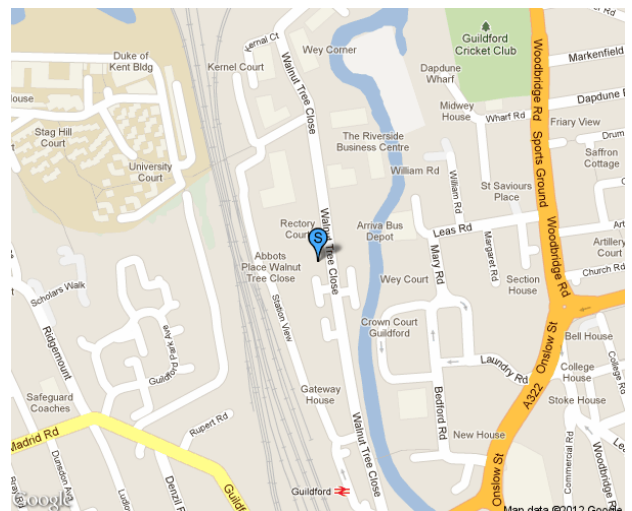
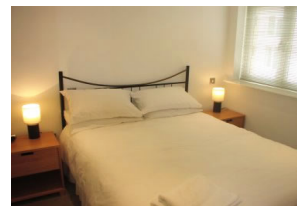
Kitchen type: Fully equipped kitchen
Dishwasher
Washer/Dryer: Washer dryer
Sofa-Bed type: Not applicable
Terrace/balcony/patio: Some
Appliance instruction manuals provided
Energy saving features: Some
Sofa-Bed: No

AUDIO VISUAL FEATURES

*TV standard
DVD player
Hi-Fi/stereo
TV service: Freeview

COMMUNICATIONS & BUSINESS

Direct dial telephone
*Internet
Internet connection instructions
Internet cost: Free
Internet: Wired & wireless



* means "Applies to some but not all apartments"

means "Subject to availability/Available upon request"