



SilverDoor®

Brindley Place Apartments, Centre, Birmingham

DESCRIPTION

These modern serviced apartments in Birmingham enjoy a great location within Brindley Place, an area known for its vibrant atmosphere and fantastic array of bars, restaurants and entertainment venues.

Close to the apartments are prominent landmarks such as the International Convention Centre, Symphony Hall, and the acclaimed Bullring shopping centre. Five Ways railway station is also nearby for convenient travel connections to the rest of the city.

All the apartments have spectacular views over the city centre and are a great base as corporate or leisure accommodation, with good access to the many attractions that Birmingham and the surrounding area have to offer. Each comfortable apartment has high-quality, contemporary interiors and ample space to work in with wireless broadband internet access (chargeable) and state-of-the-art telecommunication systems. Some of the apartments are split level with floor to ceiling windows. There is a communal courtyard garden accessible to guests.

RATING



PROPERTY SERVICES

- Reception hours: 24 Hour
- Key collection: On site
- Maid service: Once weekly
- Wheelchair accessible apartments: Some
- Lift
- Check-in time: 16.00
- Check-out time: 11.00
- Concierge
- Hotel style reception
- Basic concierge

PROPERTY SAFETY AMENITIES

- Fire certificate
- Apartment smoke alarm
- Continuously monitored alarms
- Automatic fire doors
- Emergency information in apartments
- Emergency lighting
- On-site security: 24 Hour
- First aider: Limited Hours
- Electronic key cards
- Public liability insurance
- Fire blanket and/or extinguisher
- Emergency exit signage
- Gas safety check
- Electrical safety check
- Fire risk assessment carried out
- Management support available 24 hours: By phone

FOOD AND DRINK FACILITIES

- Welcome pack: Free
- Shopping service
- On-site restaurant
- On-site cafe
- On-site bar
- On-site food shop

APARTMENT FEATURES

- Kitchen type: Fully equipped kitchen
- Dishwasher
- Washer/Dryer: Some*
- Sofa-Bed type: Not applicable
- Safe: In apartment
- Terrace/balcony/patio: Some
- Recycling facilities
- Appliance instruction manuals provided
- Energy saving features: Some
- Sofa-Bed: No

LEISURE FACILITIES

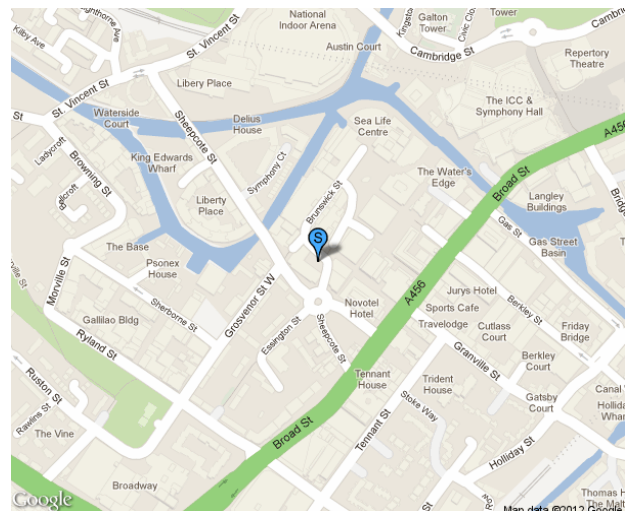
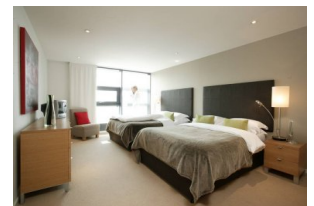
- On-site fitness centre: Chargeable
- Cardio vascular equipment: Chargeable
- Spa treatments available: Chargeable
- Sauna: Chargeable
- Steam room: Chargeable
- Swimming pool: Chargeable
- Jacuzzi/Hot tub: Chargeable
- Gardens/Roof deck

AUDIO VISUAL FEATURES

- DVD player
- Hi-Fi/stereo
- MP3 plug in
- TV set: Flat screen
- TV service: Freeview

COMMUNICATIONS & BUSINESS

- Direct dial telephone
- *Internet: Wireless
- Internet connection instructions
- Internet cost: Free
- Wireless internet in public areas: Free
- Internet: Wireless



* means "Applies to some but not all apartments"

means "Subject to availability/Available upon request"