



SilverDoor®

Gloucester Park, South Kensington, London

DESCRIPTION

Gloucester Park is a contemporary development of modern one, two, three and four bedroom apartments.

These London serviced apartments are located just around the corner from Gloucester Road tube station which provides good transport connections to the rest of the capital.

In each refined self-catering apartment the living room has a large picture window with doors which open up onto a private balcony, a fully-equipped Miele kitchen with the latest appliances and the bedrooms are tastefully decorated and complete with an en-suite bathroom.

Guests to these modern apartments will have access to the complimentary on-site fitness centre and saunas, twenty four hour concierge and portage services and full housekeeping.

CCTV is in operation, as well as secure underground parking which is available at an additional charge, for accommodation with added peace of mind.

RATING



PROPERTY SERVICES

- Reception
- Key collection: On site
- Maid service: Monday-Friday
- Laundry service
- Lift
- Check-in time: 17.00
- Check-out time: 12.00

PROPERTY SAFETY AMENITIES

- Fire certificate
- Apartment smoke alarm
- Continuously monitored alarms
- Automatic fire doors
- Emergency information in apartments
- Emergency lighting
- On-site security: 24 Hour
- First aider: 24 Hours

FOOD AND DRINK FACILITIES

- Welcome pack: Free
- Shopping service
- Communal residents lounge
- Room service: Limited Hours

APARTMENT FEATURES

- Kitchen type: Fully equipped kitchen*
- Dishwasher
- Washer/Dryer: Washer dryer
- Sofa-Bed type: Not applicable
- Safe: In apartment

LEISURE FACILITIES

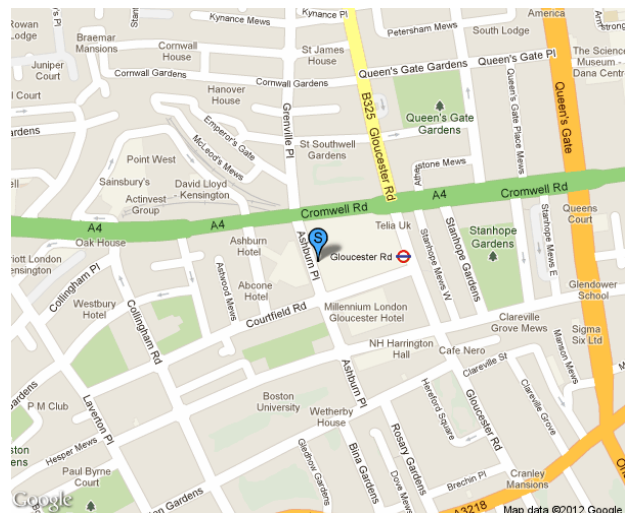
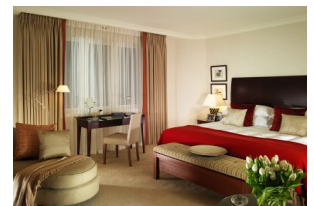
- Fitness centre: Free
- Cardio vascular equipment: Free
- Sauna: Free
- Gardens/Roof deck

AUDIO VISUAL FEATURES

- *TV standard

COMMUNICATIONS & BUSINESS

- Direct dial telephone
- *Internet
- Internet cost: Chargeable



* means "Applies to some but not all apartments"

means "Subject to availability/Available upon request"